

CENTRAL PNEUMATIC® 3" HIGH SPEED AIR CUTTER

Model 47077

ASSEMBLY AND OPERATING INSTRUCTIONS



Visit our website at: <http://www.harborfreight.com>



**Read this material before using this product.
Failure to do so can result in serious injury.
SAVE THIS MANUAL.**

Copyright© 2002 by Harbor Freight Tools®. All rights reserved. No portion of this manual or any artwork contained herein may be reproduced in any shape or form without the express written consent of Harbor Freight Tools. Diagrams within this manual may not be drawn proportionally. Due to continuing improvements, actual product may differ slightly from the product described herein. Tools required for assembly and service may not be included.

For technical questions or replacement parts, please call 1-800-444-3353.

SPECIFICATIONS

Cutting Disc. Size	3" Diameter (not included)
Required Disc. Rating	18,000 RPM Minimum
Arbor Size	3/8"
Hose Size	3/8"
Maximum Pressure	90 PSI
Air Inlet Fitting Size	1/4" - 18 NPT Female
Maximum Rated Speed	18,000 RPM at 90 PSI
Air Consumption	5.5 SCFM
Weight	1.6 Lb.
Tool Accessories	Hex Key Wrench, Spanner

SAVE THIS MANUAL

You will need this manual for the safety warnings and precautions, assembly, operating, inspection, maintenance and cleaning procedures, parts list and assembly diagram. Keep your invoice with this manual. Write the invoice number on the inside of the front cover. Keep this manual and invoice in a safe and dry place for future reference.

GENERAL SAFETY WARNINGS AND PRECAUTIONS

1. **KEEP WORK AREA CLEAN AND DRY.** Cluttered, damp, or wet work areas invite injuries.
2. **KEEP CHILDREN AWAY FROM WORK AREA.** Do not allow children to handle this product.
3. **STORE IDLE EQUIPMENT.** When not in use, tools and equipment should be stored in a dry location to inhibit rust. Always lock up tools and equipment, and keep out of reach of children.
4. **DO NOT USE THIS PRODUCT IF UNDER THE INFLUENCE OF ALCOHOL OR DRUGS.** Read warning labels on prescriptions to determine if your judgement or reflexes are impaired while taking drugs. If there is any doubt, do not attempt to use this product.
5. **USE EYE AND HAND PROTECTION.** Wear ANSI-approved safety impact eyeglasses and heavy-duty work gloves when using this product. ANSI-approved safety impact eyeglasses and heavy-duty work gloves are available from Harbor Freight Tools.
6. **DRESS SAFELY.** Do not wear loose clothing or jewelry, as they can become caught in moving parts. Wear a protective hair covering to prevent long hair from becoming caught in moving parts. If wearing a long-sleeve shirt, roll sleeves up above elbows.

7. **DO NOT OVERREACH.** Keep proper footing and balance at all times to prevent tripping, falling, back injury, etcetera.
8. **INDUSTRIAL APPLICATIONS MUST FOLLOW OSHA REQUIREMENTS.**
9. **STAY ALERT.** Watch what you are doing at all times. Use common sense. Do not use this product when you are tired or distracted from the job at hand.
10. **CHECK FOR DAMAGED PARTS.** Before using this product, carefully check that it will operate properly and perform its intended function. Check for damaged parts and any other conditions that may affect the operation of this product. Replace or repair damaged or worn parts immediately.
11. **REPLACEMENT PARTS AND ACCESSORIES:** When servicing, use only identical replacement parts. Only use accessories intended for use with this product. Approved accessories are available from Harbor Freight Tools.
12. **MAINTAIN THIS PRODUCT WITH CARE.** Keep this product clean and dry for better and safer performance.
13. **MAINTENANCE:** For your safety, service and maintenance should be performed regularly by a qualified technician.
14. **USE THE RIGHT PRODUCT FOR THE RIGHT JOB.** There are certain applications for which this product was designed. Do not use small equipment, tools, or attachments to do the work of larger industrial equipment, tools, or attachments. Do not use this product for a purpose for which it was not intended.
15. **WARNING:** The warnings, precautions, and instructions discussed in this manual cannot cover all possible conditions and situations that may occur. The operator must understand that common sense and caution are factors, which cannot be built into this product, but must be supplied by the operator.

SPECIFIC PRODUCT WARNINGS AND PRECAUTIONS

1. **USE CLEAN, DRY, REGULATED COMPRESSED AIR AT NO MORE THAN 90 PSI.** Never use oxygen, carbon dioxide, combustible gases, or any other bottled gas as a power source for this tool.
2. **NOTE:** An air compressor is not provided. You will need an air compressor with a minimum rating of one horsepower, 5.5 SCFM delivery at 90 PSI, and a 12 gallon air tank.
3. **WHEN CONNECTING TO THE AIR SUPPLY:** Prior to each use, if an automatic oiler is not used, add two drops of air tool oil (not provided) into the Inlet Bushing (1) of the Air Cutter. Turn on the air compressor, and set the regulator to the recommended 90 PSI for this tool. **(See Figures A, B, and Assy. Diagram.)**

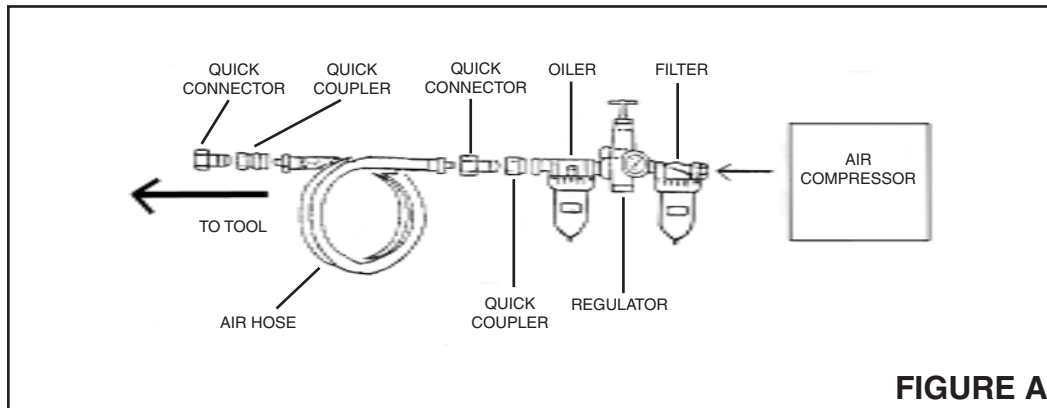


FIGURE A

4. **DO NOT MODIFY THE SAFETY SHUT-OFF MECHANISM.** The Throttle Lever (3) on the Air Cutter features a Safety Lock (7), which is a safety shut-off mechanism. When pressure is released from the Throttle Lever, the Safety Lock will automatically shut off the tool. For your safety, and the safety of others, do not modify the Safety Lock in any way. **(See Figure B, and Assy. Diagram.)**
5. **MAINTAIN A SAFE WORKING ENVIRONMENT.** Keep the work area well lit. Make sure there is adequate surrounding workspace. Always keep the work area free of obstructions, grease, oil, trash, and other debris. Do not use the Air Cutter in areas near flammable chemicals, dusts, and vapors.
6. **TO AVOID PERSONAL INJURY, ALWAYS KEEP HANDS, FINGERS, AND FEET AWAY FROM THE SPINNING CUTTING DISC.**
(See Figure B, and Assy. Diagram.)
7. **ALWAYS DISCONNECT THE AIR CUTTER FROM ITS COMPRESSED AIR SUPPLY SOURCE BEFORE PERFORMING ANY SERVICES OR MAINTENANCE.** Make sure to disconnect the Air Cutter from its compressed air supply source when leaving the work area, moving the tool from one location to another, handing the tool to another person, etcetera.
8. **MAKE SURE TO REMOVE ALL ADJUSTING WRENCHES FROM THE AIR CUTTER PRIOR TO USING.**
9. **WARNING:** Only use 3" Cutting Discs rated at more than 18,000 RPM and greater.
10. **DO NOT USE UNAPPROVED ACCESSORIES.** Do not use circular saw blades or wire brushes on this tool. Do not use any accessory except a 3" diameter Cutting Disc.

11. **DO NOT REMOVE THE PROTECTION GUARD (30).** Always leave the Protection Guard in place. Never use the Air Cutter without the Protection Guard in place and in proper working condition.
12. **WARNING:** Some dust created by power sanding, sawing, grinding, drilling, and other construction activities, contain chemicals known (to the State of California) to cause cancer, birth defects or other reproductive harm. Some examples of these chemicals are: lead from lead-based paints, crystalline silica from bricks and cement or other masonry products, arsenic and chromium from chemically treated lumber. Your risk from these exposures varies, depending on how often you do this type of work. To reduce your exposure to these chemicals: work in a well ventilated area, and work with approved safety equipment, such as those dust masks that are specially designed to filter out microscopic particles. The brass components of this product contain lead, a chemical known to the State of California to cause birth defects (or other reproductive harm). (California Health & Safety Code § 25249.5, *et seq.*)

UNPACKING

When unpacking, check to make sure all the parts shown on the **Parts List** (page 8) are included. If any parts are missing or broken, please call Harbor Freight Tools at the number shown on the cover of this manual as soon as possible.

ASSEMBLY INSTRUCTIONS

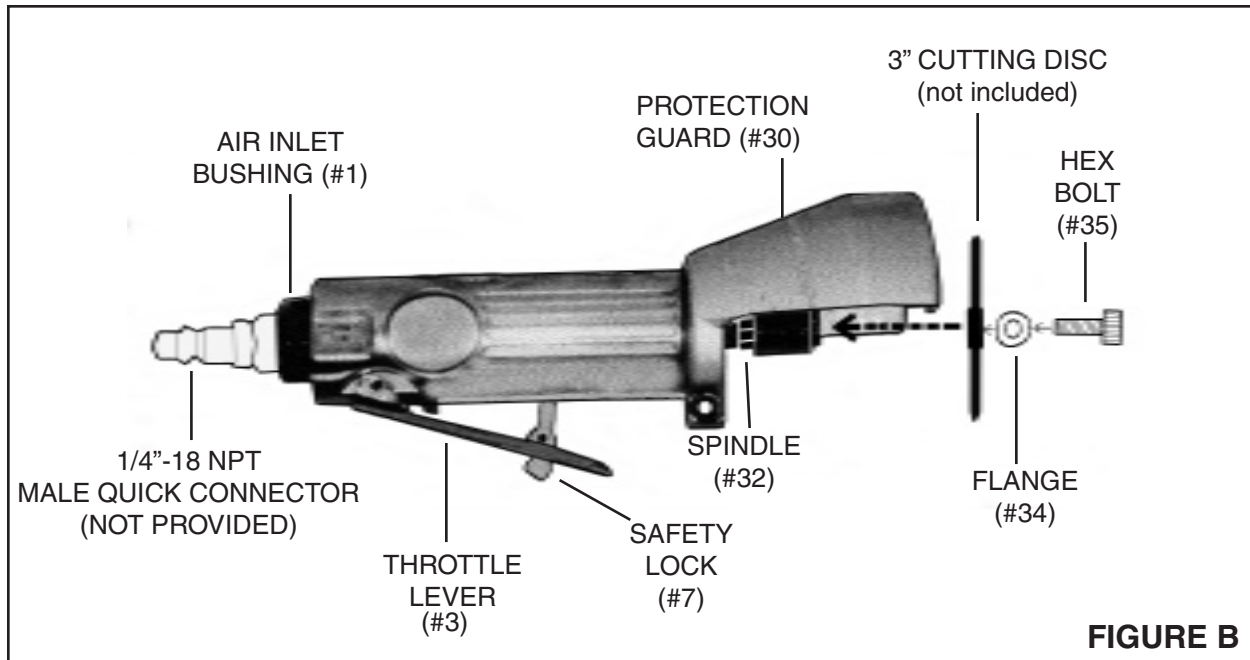
NOTE: For additional references to the parts listed below, refer to the **Assembly Diagram on page 8.**

To Connect An Air Hose To The Air Cutter:

The Air Cutter requires the attachment of a 1/4"-18 NPT Male Quick Connector (not provided). To attach a Quick Connector to the Air Cutter, wrap the threaded portion of the Quick Connector with about 3" of pipe thread seal tape (not provided). Next, wrench tighten the Quick Connector into the Inlet Bushing (1) of the Air Cutter. Then, connect the Quick Coupler of an air hose (not provided) onto the Quick Connector. **(See Figures A, B, and Assy. Diagram.)**

To Attach The 3" Cutting Disc:

1. Use the Spanner (36) to hold the Spindle (32) in place while, at the same time, loosening and removing the Hex Bolt (35) and Flange (34) with the Hex Key Wrench (37). **(See Figure B, and Assy. Diagram.)**



2. Insert the 3" cutting disc (not included) onto the Spindle (32). Then, use the Spanner (36) to hold the Spindle in place. Next, insert the Hex Bolt (35) through the Flange (34), through the 3" cutting disc, and back into the Spindle. Secure the 3" cutting disc to the Spindle by tightening the Hex Bolt into the Spindle with the Hex Key Wrench (37). **(See Figure B, and Assy. Diagram.)**

OPERATING INSTRUCTIONS

1. Set the air compressor's regulator to 90 PSI. **Caution:** Do not exceed 90 PSI.
2. Connect the Air Cutter to the air compressor hose.
3. Secure the workpiece you are cutting in a vise. The workpiece must be secured so that it cannot move while you are performing the work.
4. Mark the workpiece area where you wish to cut.
5. With both hands, grip the Air Cutter so that your thumbs rest on the Throttle Lever (3) and Safety Stick (7). **(See Figure B, and Assy. Diagram.)**
6. Make sure the 3" cutting disc is not touching the surface of the workpiece. **(See Figure B, and Assy. Diagram.)**

7. Press the Safety Lock (7) forward as you press down on the Throttle Lever (3). **NOTE:** The Air Cutter's speed is variable. Vary the pressure placed on the Throttle Lever to vary the speed of the tool. Use only enough speed as needed to cut the workpiece. (See Figure B, and Assy. Diagram.)
8. Slowly and carefully place the edge of the 3" cutting disc onto the surface of the workpiece. **(See Figure B, and Assy. Diagram.)**
9. Keep a steady pressure on the Air Cutter. But do not force the tool, as you will stall the Air Cutter. Use only enough pressure to do the job properly.
10. When you are finished with the job at hand, release all pressure on the Throttle Lever (3) to stop the tool. **(See Figure B, and Assy. Diagram.)**

INSPECTION, MAINTENANCE, AND CLEANING

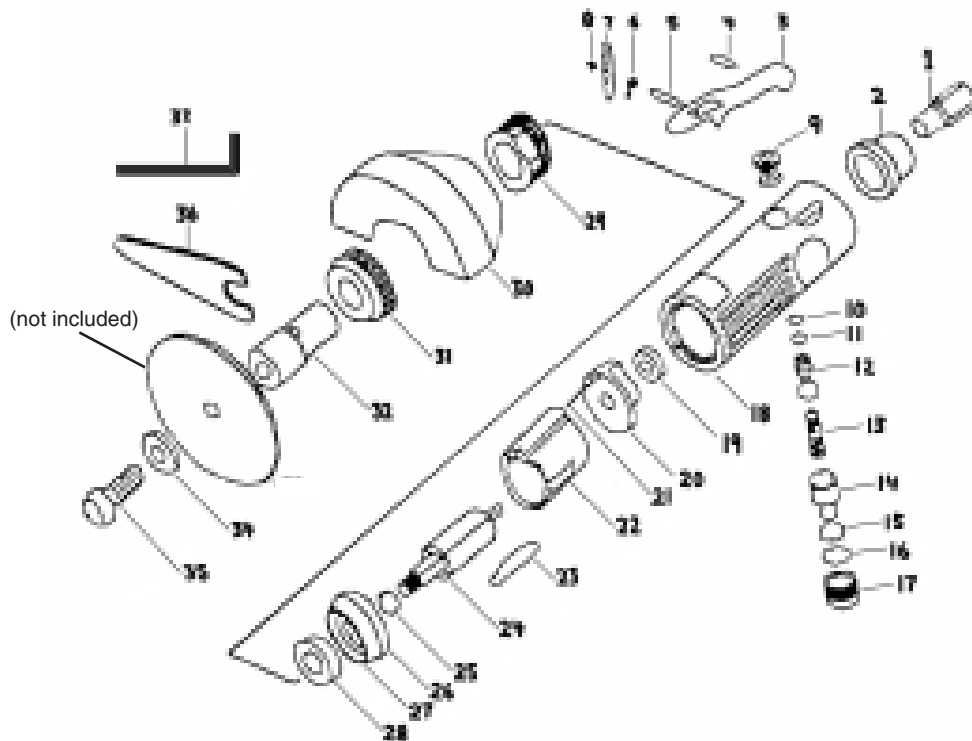
1. **CAUTION:** Always disconnect the Air Cutter from its compressed air supply source before performing any inspection, maintenance, or cleaning.
2. **BEFORE EACH USE,** inspect the general condition of the Air Cutter. Check for loose screws, misalignment or binding of moving parts, cracked or broken parts, dull or damaged Cutting Disc, damaged air supply hose, and any other condition that may affect the safe operation of this tool. If abnormal noise or vibration occurs, immediately disconnect the Air Cutter from its compressed air supply source and have the problem corrected before further use.
Do not use damaged equipment.
3. **PERIODICALLY,** use a premium quality, lightweight oil to lubricate all moving parts.
4. **WHEN NECESSARY,** wipe with a damp cloth, using a mild detergent or mild solvent.
5. **WHEN STORING,** keep the Air Cutter in a box or covered with a clean cloth.

PLEASE READ THE FOLLOWING CAREFULLY

THE MANUFACTURER AND/OR DISTRIBUTOR HAS PROVIDED THE PARTS LIST AND ASSEMBLY DIAGRAM IN THIS MANUAL AS A REFERENCE TOOL ONLY. NEITHER THE MANUFACTURER OR DISTRIBUTOR MAKES ANY REPRESENTATION OR WARRANTY OF ANY KIND TO THE BUYER THAT HE OR SHE IS QUALIFIED TO MAKE ANY REPAIRS TO THE PRODUCT, OR THAT HE OR SHE IS QUALIFIED TO REPLACE ANY PARTS OF THE PRODUCT. IN FACT, THE MANUFACTURER AND/OR DISTRIBUTOR EXPRESSLY STATES THAT ALL REPAIRS AND PARTS REPLACEMENTS SHOULD BE UNDERTAKEN BY CERTIFIED AND LICENSED TECHNICIANS, AND NOT BY THE BUYER. THE BUYER ASSUMES ALL RISK AND LIABILITY ARISING OUT OF HIS OR HER REPAIRS TO THE ORIGINAL PRODUCT OR REPLACEMENT PARTS THERETO, OR ARISING OUT OF HIS OR HER INSTALLATION OF REPLACEMENT PARTS THERETO.

PARTS LIST / ASSEMBLY DIAGRAM

Part #	Description	Qty	Part #	Description	Qty
1	Inlet Bushing	1	19	Bearing	1
2	Exhaust Deflector	1	20	Rear End Plate	1
3	Throttle Lever	1	21	Spring Pin	1
4	Spring Pin	1	22	Cylinder	1
5	Spring Pin	1	23	Rotor Blade	4
6	Spring	1	24	Rotor	1
7	Safety Lock	1	25	Washer	1
8	Washer	1	26	Spring Pin	2
9	Valve	1	27	Front End Plate	1
10	O-Ring	1	28	Bearing	1
11	O-Ring	1	29	Retainer	1
12	Throttle Valve	1	30	Protection Guard	1
13	Spring	1	31	Housing Cap	1
14	Air Regulator	1	32	Spindle	1
15	O-Ring	1	34	Flange	1
16	O-Ring	1	35	Hex Bolt	1
17	Valve Screw	1	36	Spanner	1
18	Housing	1	37	Hex Key Wrench	1



NOTE: Some parts are listed and shown for illustration purposes only, and are not available individually as replacement parts.

LIMITED 1 YEAR WARRANTY

Harbor Freight Tools Co. makes every effort to assure that its products meet high quality and durability standards, and warrants to the original purchaser that this product is free from defects in materials and workmanship for the period of one year from the date of purchase (90 days if used by a professional contractor or if used as rental equipment). This warranty does not apply to damage due directly or indirectly, to misuse, abuse, negligence or accidents, repairs or alterations outside our facilities, normal wear and tear, or to lack of maintenance. We shall in no event be liable for death, injuries to persons or property, or for incidental, contingent, special or consequential damages arising from the use of our product. Some states do not allow the exclusion or limitation of incidental or consequential damages, so the above limitation of exclusion may not apply to you. THIS WARRANTY IS EXPRESSLY IN LIEU OF ALL OTHER WARRANTIES, EXPRESS OR IMPLIED, INCLUDING THE WARRANTIES OF MERCHANTABILITY AND FITNESS.

To take advantage of this warranty, the product or part must be returned to us with transportation charges prepaid. Proof of purchase date and an explanation of the complaint must accompany the merchandise. If our inspection verifies the defect, we will either repair or replace the product at our election or we may elect to refund the purchase price if we cannot readily and quickly provide you with a replacement. We will return repaired products at our expense, but if we determine there is no defect, or that the defect resulted from causes not within the scope of our warranty, then you must bear the cost of returning the product.

This warranty gives you specific legal rights and you may also have other rights which vary from state to state.

3491 Mission Oaks Blvd. • PO Box 6009 • Camarillo, CA 93011 • (800) 444-3353