



# ADJUSTABLE TORQUE SCREWDRIVER WITH TIRE PRESSURE MONITORING SYSTEM SERVICE KIT, 2-36 INCH LBS.

**Model 65396**

**Model 65397**



## INSTRUCTIONS AND PRECAUTIONS

Distributed exclusively by Harbor Freight Tools®.

3491 Mission Oaks Blvd., Camarillo, CA 93011

Visit our website at: <http://www.harborfreight.com>



### SAVE THESE INSTRUCTIONS. READ ALL PRECAUTIONS AND INSTRUCTIONS.

Copyright© 2008 by Harbor Freight Tools®. All rights reserved. No portion of this document or any artwork contained herein may be reproduced in any shape or form without the express written consent of Harbor Freight Tools. Diagrams within this document may not be drawn proportionally. Due to continuing improvements, actual product may differ slightly from the product described herein. Tools required for assembly and service may not be included.

For technical questions or replacement parts, please call 1-800-444-3353.

#### SPECIFICATIONS

|              |   |
|--------------|---|
| Torque Range | 65396: 20-90 in/lb. (10 line increments)<br>65397: 2-36 in/lb. (18 line increments) |
| Drive Size   | 1/4" (Both Models)  |
| Dimensions   | 65396: 6-7/8" x 1-3/8"<br>65397: 7-5/8" x 1-5/16"                                   |

#### UNPACKING

When unpacking, make sure item is intact and undamaged. If any parts are missing or broken, call Harbor Freight Tools at the number shown on the cover of this document as soon as possible.

#### IMPORTANT SAFETY INFORMATION

1. Wear ANSI-approved safety goggles and heavy-duty work gloves during use.
2. Do not overtighten during use.
3. Do not use as hammer, chisel, or pry bar.
4. Do not use extension to increase torque.
5. Use for intended purpose(s) only.
6. Inspect before each use; do not use if parts are loose or damaged.
7. This product is not a toy. Do not allow children to play with or near this item.
8. Maintain product labels and nameplates. These carry important safety information.

If unreadable or missing, contact Harbor Freight Tools for a replacement.



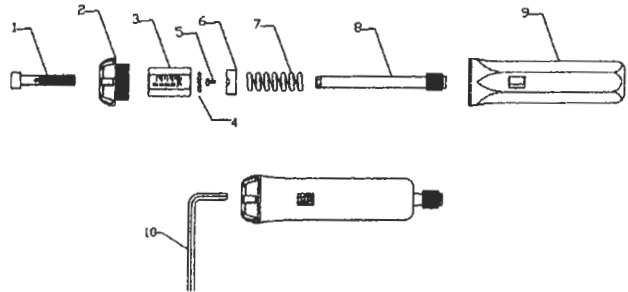
Read the **ENTIRE SAFETY INFORMATION** section at the beginning of this document before set up or use of this product.

### OPERATION (FOR MODEL 65396)

- To adjust torque for 65396 Screwdriver, insert Hex Key (10) into Adjusting Screw (1).
- Turn the Adjusting Screw counterclockwise to increase torque and turn clockwise to decrease amount of torque, as indicated on by the guides on the End Cap (2).
- Use the Scale (3) on the side of the Housing (9) to gauge the level of torque.
- Once desired level of torque is reached, set the Bit Holder (8) over the bit.

## 65396 PARTS LIST & DIAGRAM

| Part | Description     | Qty. |
|------|-----------------|------|
| 1    | Adjusting Screw | 1    |
| 2    | End Cap         | 1    |
| 3    | Scale           | 1    |
| 4    | Steel Ball      | 6    |
| 5    | Screw           | 1    |
| 6    | Ball Seat       | 1    |
| 7    | Coil Spring     | 1    |
| 8    | Bit Holder      | 1    |
| 9    | Housing         | 1    |
| 10   | Hex Key         | 1    |



### OPERATION (FOR MODEL 65397)

- To adjust the torque for the 65397 Screwdriver, turn the Adjusting Knob (1) counterclockwise to increase amount of torque and turn clockwise to decrease torque.
- Use View Lens (10) to view Scale (7) on side of the Handle (9) to gauge the level of torque.
- Once the desired level of torque is reached, set the Bit Holder (2) over the bit.

## 65397 PARTS LIST & DIAGRAM

| Part | Description             | Qty. |
|------|-------------------------|------|
| 1    | Adjusting Knob          | 1    |
| 2    | Bit Holder              | 1    |
| 3    | Main Shaft              | 1    |
| 4    | Adjusting Nut           | 1    |
| 5    | Coil Spring             | 1    |
| 6    | Cap Nut                 | 1    |
| 7    | Scale                   | 1    |
| 8    | Scale Nut               | 1    |
| 9    | Handle                  | 1    |
| 10   | View Lens               | 1    |
| 11   | Square Adapter 1/4" Hex | 1    |
| 12   | Deep Socket 11mm        | 1    |
| 13   | Deep Socket 12mm        | 1    |

### MAINTENANCE

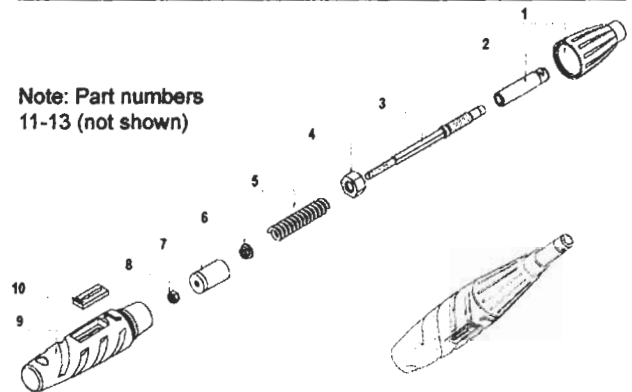
- When done, change to a low torque setting before storing. This will reduce wear.
- If the Torque Screwdriver has not been used for some time, adjust handle and/or change torque setting to low amount before use. This will reduce wear.
- Wipe with a clean cloth after use; do not immerse in any kind of cleaning solution.
- The Torque Screwdriver was calibrated and tested to +/- 6%. Periodically have the Screwdriver calibrated and serviced by a qualified technician.

Record Serial Number Here: \_\_\_\_\_

**Note:** If product has no serial number, record month and year of purchase instead.

**Note:** Some parts are listed and shown for illustration purposes only, and are not available individually as replacement parts.

Note: Part numbers 11-13 (not shown)



### PLEASE READ THE FOLLOWING CAREFULLY

THE MANUFACTURER AND/OR DISTRIBUTOR HAS PROVIDED THE PARTS LIST AND ASSEMBLY DIAGRAM IN THIS DOCUMENT AS A REFERENCE TOOL ONLY. NEITHER THE MANUFACTURER OR DISTRIBUTOR MAKES ANY REPRESENTATION OR WARRANTY OF ANY KIND TO THE BUYER THAT HE OR SHE IS QUALIFIED TO MAKE ANY REPAIRS TO THE PRODUCT, OR THAT HE OR SHE IS QUALIFIED TO REPLACE ANY PARTS OF THE PRODUCT. IN FACT, THE MANUFACTURER AND/OR DISTRIBUTOR EXPRESSLY STATES THAT ALL REPAIRS AND PARTS REPLACEMENTS SHOULD BE UNDERTAKEN BY CERTIFIED AND LICENSED TECHNICIANS, AND NOT BY THE BUYER. THE BUYER ASSUMES ALL RISK AND LIABILITY ARISING OUT OF HIS OR HER REPAIRS TO THE ORIGINAL PRODUCT OR REPLACEMENT PARTS THERETO, OR ARISING OUT OF HIS OR HER INSTALLATION OF REPLACEMENT PARTS THERETO.

# TESTING REPORT

Unit Under Test :

Model No : \_\_\_\_\_

Model Serial# : \_\_\_\_\_

Accuracy :  $\pm$  6.00 %

Temp/Humidity : \_\_\_\_\_ $^{\circ}$ C / \_\_\_\_\_ $^{\circ}$ F

Work Order : \_\_\_\_\_

|          | As Left     |       | As Left      |       | As Left      |       |
|----------|-------------|-------|--------------|-------|--------------|-------|
| TEST#    | <b>8.00</b> | In.Lb | <b>20.00</b> | In.Lb | <b>34.00</b> | In.Lb |
| 1        | 8.1         | %     | 19.6         | %     | 34.6         | %     |
| 2        | 8.0         | %     | 19.8         | %     | 34.9         | %     |
| 3        | 8.1         | %     | 20.3         | %     | 34.5         | %     |
| 4        | 8.0         | %     | 20.6         | %     | 35.2         | %     |
| 5        | 7.8         | %     | 19.9         | %     | 33.9         | %     |
| Average: |             |       |              |       |              |       |

Tested by operator : WEI HUA

Approved by : \_\_\_\_\_

Date Issued : \_\_\_\_\_